



# WelcomHeritage

Palaces • Forts • Havelis • Resorts



## WelcomHeritage Shivavilas Palace, Sandur

No. 97, Palace Road, Bellary Distt. Sandur, Karnataka - 583119, India

WelcomHeritage Shivavilas Palace, this Anglo Saxon Structure was built in the year 1940 in the reign of Shrimant Sarkar Maharaj Yeshwanthrao Hindurao Ghorpade and stands as a testimony to the rise of a kingdom. Built over a sprawling area of about 20 acres, the Palace has 2 floors of about 20,000 sq. ft. each. It is situated in a picturesque valley in Sandur, very close to the Hampi World Heritage Site.

### ACCOMODATION

Total Rooms: 12

Deluxe Rooms: 10

Maharaja Suite: 01

Categories: 03

Maharani Suite : 01

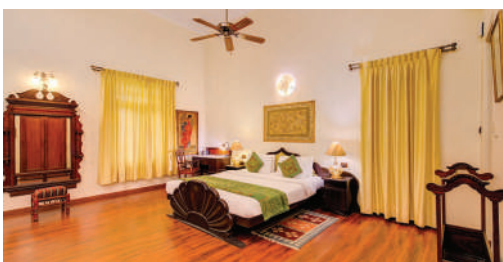
### FOOD AND BEVERAGE

**Durbaar** - Specializes in Indian and local traditional cuisine.

**Sandur Pavillion** - Serving a-la-carte menu of delightful Pan-Indian, Chinese and continental cuisine.

**Coffee Shop** - Famous for serving authentic South Indian filter coffee in steel cups that sit atop containers known as dabarah.

**The Royal Grill** - Serves live Barbecue by the poolside.



## SERVICES & FACILITIES

Barbeque area	Doctor on call
Car parking	24 hours room service
Laundry service (Chargeable)	Wi-Fi facility

## LEISURE AND RECREATIONS

Swimming pool and spa	Kids play area
Library	Billiards and bar
Vintage and classic car museum	Bird watching
Darbar hall museum	Off-road bike riding

## MEETINGS & CONFERENCES

Venue	Theatre	Class Room	U-Shape	Floating
Main Lawn	500	550	300	400
West Lawn	350	400	250	450
Board Room	-	-	12	-
Corporate Lounge	25	25	15	20
Royal Meeting Room	40	35	25	30
Barbecue Poolside Lawn	45	35	30	40

## EXCURSIONS

Tungabhadra Dam - 29 km (approximately 40 mins)
Hampi - 41 km (approximately 50 mins)
Queen's Bath - 40 km (approximately 50 mins)
Daroji Sloth Bear Sanctuary - 39 km (approximately 60 mins)
Lotus Mahal - 40 km (approximately 60 mins)



## HOW TO REACH

✈ Distance from Jindal Vidyanagar Airport - 18 km
✈ Distance from Hubli Airport - 180 km
🚗 Distance from Hosapete Junction (Hospet) - 30 km
📍 Distance from Bangalore - 315 km/ 5 hrs

### LOCATION

No. 97, Palace Road, Bellary Dist.  
Sandur, Karnataka, India  
Pin Code: 583119

### FOR ENQUIRIES

**Corporate Office Contact**  
Tel: 080-45771900  
**E-mail:** holidays@welcomheritagehotels.in  
**Hotel Contact**  
Tel: +91 9480815521, +91 8395260309/310  
**E-mail:** shivavilaspalace@sandurgroup.com

www.welcomheritagehotels.in | Follow us on [f](#) [x](#) [o](#) [v](#) [i](#)

### Sales offices

Ahmedabad (8980269876) | Mumbai (7291014044) | Jaipur (8107528107)  
Delhi (9650776233) | Nagpur (7291018088) | Punjab (8427883332)